

GCSE Biology B (Twenty First Century Science)
J257/04 Depth in biology (Higher Tier)

Question Set 4

1

Plants can be infected by diseases caused by pathogens.

The plant disease ash dieback was first recorded in the early 1990s in Poland.

Since then, many thousands of trees in northern Europe have become infected.



Ash dieback was first found in eastern parts of Great Britain (GB) in 2012, and has been spreading across the country ever since.

- (a) Suggest **two** ways in which ash dieback could have been spread from mainland Europe to Great Britain.

- (b) The British outbreak of ash dieback started in woodland in Norfolk. [2]

Much of the woodland has died, but one ash tree has shown tolerance to the disease. This tree was named 'Betty' by scientists. Tolerant trees have also been found in mainland Europe

- (i) Explain how scientists could use selective breeding to produce ash trees with improved tolerance.

- (ii) New woodland could be planted using cuttings from Betty. [3]

Explain why this could be a **disadvantage** during a future outbreak of plant disease.

[2]

- (iii) Explain how gene technology could be used to produce ash trees with improved tolerance

[4]

- (c) Amir works in a laboratory. His job is to identify pathogens that cause plant diseases.

Amir has a sample of one species of bacteria from an infected plant.

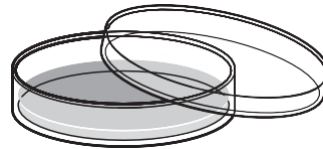
He wants to test the effectiveness of different antibiotics against this species of bacteria.

Amir must start by transferring bacteria from the sample bottle into four Petri dishes containing agar jelly.

He needs to set up four identical dishes of this species of bacteria.



glass bottle containing the sample of bacteria



Petri dish containing agar jelly

He intends to pour some of the liquid from the glass bottle into each Petri dish.

- (i) Write down **two** ways he could improve his method and explain why each is an improvement

[4]

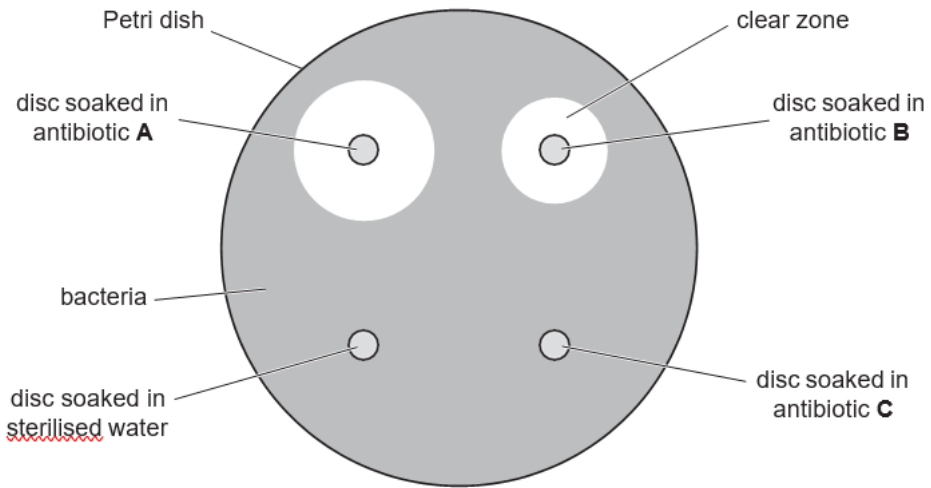
After transferring bacteria from the sample to the four Petri dishes, Amir adds four different paper discs to each dish.

The paper discs have been soaked in different solutions.

Amir places the dishes in an incubator overnight.

The bacteria grow to cover the surface of the agar jelly.

The diagram shows what Amir sees on one of the dishes after it has been incubated



not to scale

(ii) The diameter of the clear zone around the disc soaked in antibiotic **A** is 23 mm.

Calculate the area of this clear zone.

Use the equation: area of clear zone = $3.14 \times r^2$.

Give your answer to **3** significant figures.

Area of clear zone = mm² [3]

(iii) Table 4.1 shows Amir's results for all four dishes.

Disc soaked in	Area of clear zone (mm ²)			
	Petri dish 1	Petri dish 2	Petri dish 3	Petri dish 4
Antibiotic A		363	346	346
Antibiotic B	227	254	227	214
Antibiotic C	0	0	0	0
<u>Sterilised water</u>	0	0	0	0

Table 4.1

Suggest **two** possible explanations for the results for antibiotic **C**.

[2]

(d) Table 4.2 gives information about plant cells and pathogens.

Cell type	Mean diameter (μm)	Mean diameter (m)
Plant cell		8×10^{-5}
Bacterium	2	
Virus	0.25	

Table 4.2

(i) Give the mean diameter of the plant cell in μm .

Mean diameter = μm [1]

(ii) Give the mean diameter of the bacterium in m.

Give your answer in standard form.

Mean diameter = m [1]

(iii) Give the mean diameter of the plant cell, in m, to the nearest order of magnitude.

Mean diameter = m [2]

(iv) Show that the sizes of the bacterium and the virus are the same order of magnitude.

[2]

Total Marks for Question Set 4: 26

OCR

Oxford Cambridge and RSA

Copyright Information

OCR is committed to seeking permission to reproduce all third-party content that it uses in its assessment materials. OCR has attempted to identify and contact all copyright holders whose work is used in this paper. To avoid the issue of disclosure of answer-related information to candidates, all copyright acknowledgements are reproduced in the OCR Copyright Acknowledgements Booklet. This is produced for each series of examinations and is freely available to download from our public website (www.ocr.org.uk) after the live examination series.

If OCR has unwittingly failed to correctly acknowledge or clear any third-party content in this assessment material, OCR will be happy to correct its mistake at the earliest possible opportunity.

For queries or further information please contact The OCR Copyright Team, The Triangle Building, Shaftesbury Road, Cambridge CB2 8EA.

OCR is part of the Cambridge Assessment Group; Cambridge Assessment is the brand name of University of Cambridge Local Examinations Syndicate (UCLES), which is itself a department of the University of Cambridge